

# ProCapture-X

## POE Fingerprint Access Control Terminal



**ProCapture-X** is a POE fingerprint access control terminal with the most advanced SilkID technology, which not only possesses outstandingly high identification rate towards dry, wet and rough finger, but also provides the utmost security with its live finger detecting capability.

The device is designed in horizon style design and is equipped with touch keypad, which provides a superior touching experience. It also offers flexibility standalone installation or with any third-party access control panel that supports standard wiegand signal. TCP/IP, RS485 and Wi-Fi (Optional) are available that the device can be used in different networks.

## Features



Modern Design & Interactive UI



Revolutionary SilkID Fingerprint Sensor



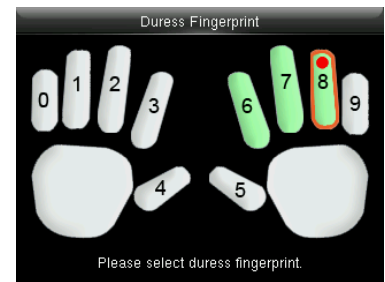
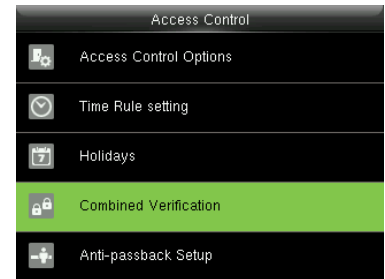
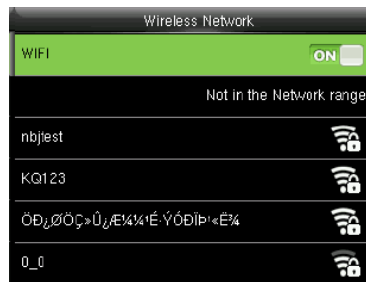
Multiple Verification Modes:  
Fingerprint / Card / Password



Outstanding Performance With  
Dry, Wet and Rough Fingers



Wireless Network  
\* Wi-Fi Connection



## Specifications G: GL Exclusive Feature)

### Capacity

Fingerprint	20,000
Cards	50,000
Transaction	500,000

### Compatibility

Wiegand Slave Reader  
G RS485 FP Slave Reader  
ZKBioSecurity Software

### Hardware

- G 1.2GHz High Speed CPU
- G Memory 128MB RAM / 256MB Flash
- SilkID Fingerprint Sensor
- 2.4 Inches TFT-LCD Screen
- 125KHz EM Reader / Mifare(Optional)
- Hi-Fi Voice & Indicator
- Tamper Switch Alarm
- G Touch Keypad
- G POE(Standard IEEE 802.3at)
- Wireless doorbell(Optional)

### Access Control Interface:

Lock Relay Output  
Alarm Output/Auxiliary Input  
Exit Button / Door Sensor  
Security Relay Box

### Special Functions:

- G Multiple Verification Modes
- G Alive Finger Detection
- ZK Encrypted Card(Optional)
- G Fingerprint Card(Optional)

### Standard Functions:

Access Levels / Groups / Holidays  
DST / Bell Schedule  
Duress Mode  
Anti-Passback  
Record Query  
Custom Wallpaper & Screen Saver

### Communication

- G TCP/IP
- G RS485 (For fingerprint&card Reader)
- USB Host
- Wiegand Input / Output
- G Wi-Fi(Optional)

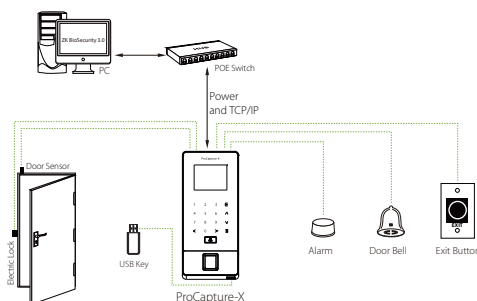
### Additional Info

Working Temperature: 0°C ~ 45 °C  
Dimensions: 200.5 × 88.5 × 28.7 mm.  
Fingerprint Algorithm ZKFinger v10.0  
Fingerprint: FAR≤0.0001% FRR≤0.01%  
Package Includes 12V 3A Power Supply

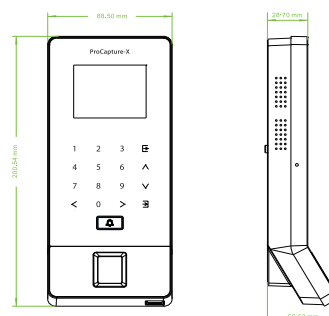
### Power

Operating Voltage 12V DC 3A  
Current Draw < 500mA

## Configuration



## Dimensions (mm)



ZKTECO CO.,LTD.  
www.zkteco.com  
E-mail: sales@zkteco.com



© Copyright 2016, ZKTECO CO.,LTD. ZKTECO Logo is a registered trademark of ZKTECO or a related company. All other product and company names mentioned are used for identification purposes only and may be the trademarks of their respective owners. All specifications are subject to change without notice. All rights reserved.